

SOCIETY OF WOMEN ENGINEERS

The latest news and updates from Rutgers SWE



• *Aspire • Advance • Achieve* •

IN THIS ISSUE

WHO WE ARE

Meet the Team.....	pg 2
Our Seniors.....	pg 3

WHAT WE'RE UP TO

SWELL Program.....	pg 4
Aspire.....	pg 5
Advance.....	pg 7
Achieve.....	pg 10

WHO SUPPORTS US

Sponsors.....	pg 13
---------------	-------

Supporting Women in Engineering at Rutgers Since 1975

The Society of Women Engineers at Rutgers University is a collegiate section of the National Society of Women Engineers. Our mission is to create a network and support-system for women in engineering to help them achieve their full potential in careers as engineers and leaders. Our organization offers mentoring, corporate, and networking events, as well as community service, outreach to pre-collegiate students, and many more opportunities to women in engineering and to Rutgers as a whole. Our chapter meets every Tuesday at 7 pm in room 174 in the Busch Campus Center at Rutgers University, New Brunswick.

For more than six decades, SWE has given women engineers a unique place and voice within the engineering industry. Our organization is centered around a passion for our members' success and continues to evolve with the challenges and opportunities reflected in today's exciting engineering and technology specialties.



Executive Board Members



ADVISOR: CANDIECE WHITE

PRESIDENT: ELIZABETH DEFAZIO

EXTERNAL VICE PRESIDENT:

BHAVINI LAKSHMANAN

INTERNAL VICE PRESIDENT: JESSICA
CARVALHO

TREASURER: ALISHA ZHU

SECRETARY: ANUSHKA PATHAK

Chair Position Holders



INDUSTRY MENTORSHIP CHAIR:

MELANIE ALPERT

ALUMNI RELATIONS CHAIR:

PEARL BUCCINE SCHRAEDER

HIGH SCHOOL OUTREACH CHAIR:

KYLIE LEW

FUNDRAISING CHAIR:

HELEN KWON

COMMUNITY SERVICE CHAIR:

AADYA GADKARI

PUBLIC RELATIONS CHAIR:

MONA RANADIVE

DIGITAL MEDIA CHAIR:

JUSTINE CATLI

HISTORIAN:

BELINDA WONG

EGC REPRESENTATIVE:

KATIE LYNCH

ADVOCACY CHAIR:

BROOKLYN M CASTILLO

Congratulations to the Class of 2021!



EMMA-LEIGH CAMERON

Major: Mechanical
Engineering



ROY KIM

Major: Biomedical
Engineering



SAMANTHA MOY

Major: Electrical & Computer
Engineering
Minor: Computer Science and Music



KINJAL PATEL

Major: Computer Engineering
and Computer Science
Minor: Spanish



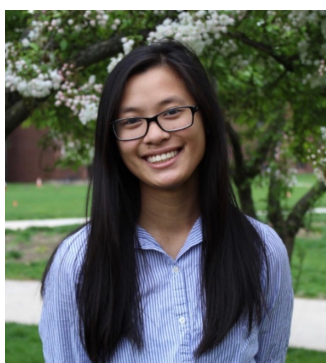
PARAM PATEL

Major: Electrical &
Computer Engineering
Minor: Biological Sciences



ATMIKA PONNUSAMY

Major: Electrical &
Computer Engineering and
Computer Science



MELISSA TU

Major: Civil Engineering
Minor: Computer Science



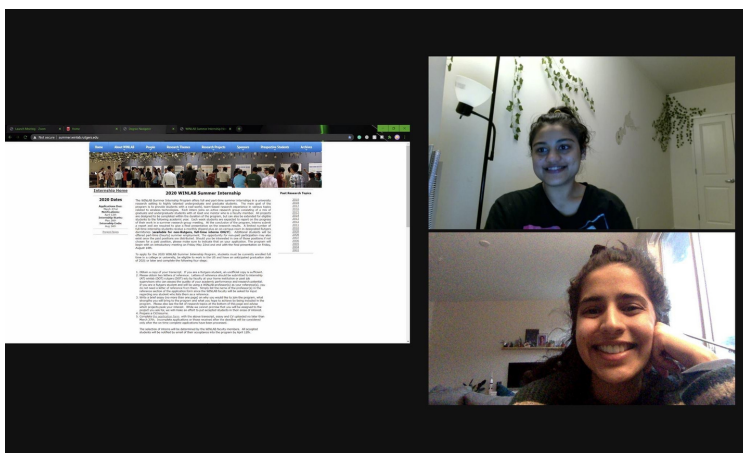
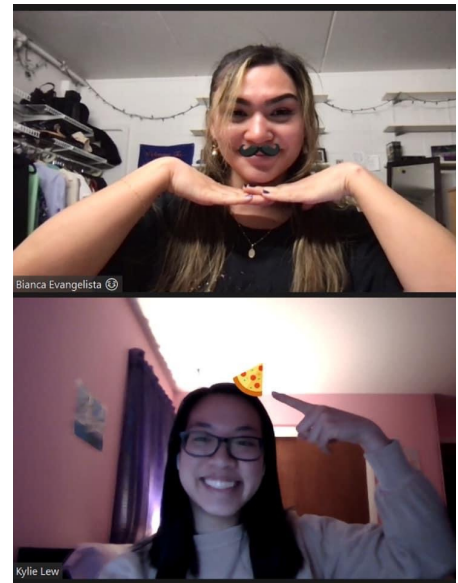
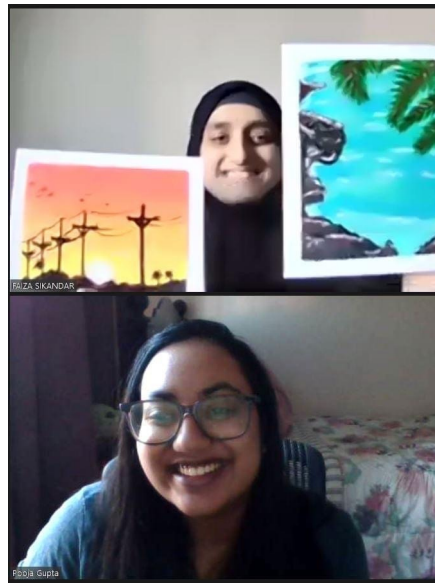
SHIVANI VYAS

Major: Biomedical Engineering
Minor: Computer Science

SWE Leader-Learner (SWELL) Mentorship Program

by Jessica Carvalho

The SWE Leaders & Learners (SWELL) Program continued into the Spring semester with new and returning pairs. This mentoring program is open to all SWE members and is designed to help first and second year students transition to and thrive at Rutgers.

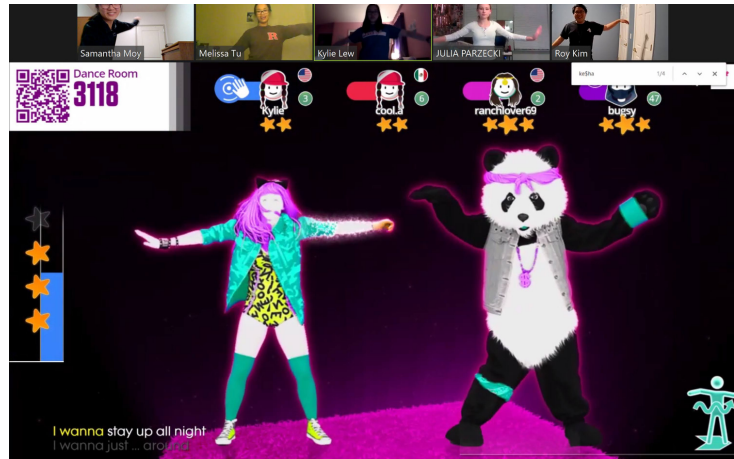


Each learner was paired with an upperclassman leader who was able to provide insightful advice, support, “Rutgers hacks,” and more! Returning learners continued to receive this help and also were able to meet up with their new friend over Zoom throughout the semester. The virtual format of the program this year made it easier than ever for pairs to meet and may influence a hybrid virtual/in-person version of the program in the future.

Dance with SWE

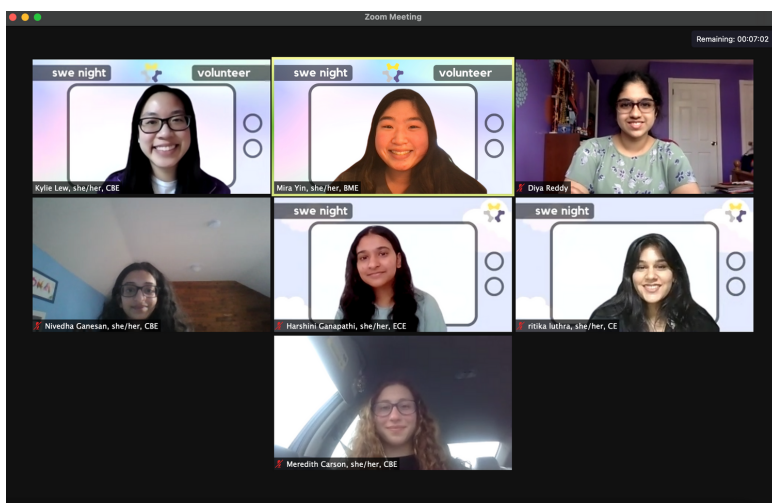
by Kylie Lew

For the past few years, our SWE section has participated in RUDM (Rutgers University Dance Marathon), the largest student-run philanthropic event in New Jersey! This year was no exception. We knew it would not be easy to fundraise during a global pandemic, but that did not stop us from doing our best for the kids. To raise funds and awareness for the Embrace Kids Foundation, we hosted a night to play Just Dance together. We received over \$100 in donations! By the day of RUDM, the SWE team had raised almost \$2,000 in total!



SWE Night

by Mona Ranadive



On Friday April 9th, our SWE section hosted our annual SWE Night event aimed to inspire female high school seniors to pursue an engineering degree at Rutgers. With 20 attendees and 20 volunteers, we had a blast with our various activities which included a design and pitch competition, a student panel, and an alumni speaker.

During our student panel, attendees had the chance to ask our panelists any questions they had about engineering, Rutgers, and being a woman in STEM. Our alumni speaker, Helen, gave us an inspiring speech about discovering yourself and being a woman in technology. Overall we had a great time hosting this event and hope to see some of our attendees from this year at next year's meeting!

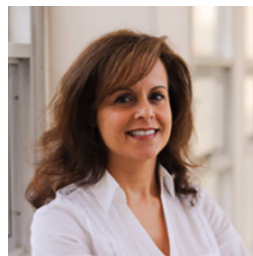
SWE Chat with Faculty

by Melanie Alpert

On April 6th, SWE members had the opportunity to chat with 8 women faculty (shown below) from 7 different departments in Rutgers School of Engineering. We started off with an introduction from each faculty member, and then had the opportunity to ask questions about being a woman in STEM, working in academia, past industry experiences, and many more topics. The discussion was very inspiring and our wonderful faculty provided great advice for aspiring engineers. Members who attended agreed that the event was a great experience. We hope to expand and strengthen our faculty connections and look forward to hosting this event again!



DR. BUETTNER (CBE)



DR. PELEGRI (MAE)



DR. WICKS (ISE)



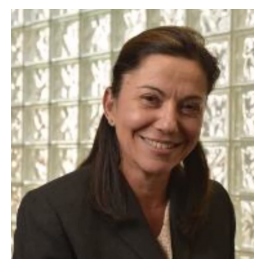
DR. LABAZZO (BME)



DR. SHAPELY (CBE)



DR. MAZUREK (CEE)



DR. GODRICH (ECE)



DR. KLEIN (MSE)

Team Game Night

by Aadya Gadkari

To kick off the spring semester, on January 29th, SWE held its spring recruitment event in the form of a Game Night. A short presentation allowed new and current members to learn more about SWE and the different opportunities it provides for students. Each team had virtual “team shirts” as zoom backgrounds and attendees were broken up into breakout rooms to play Taboo, Scattergories and Pictionary. Overall, our members had a fun filled night that encouraged bonding and some healthy competition!

Puzzles with Bloomberg

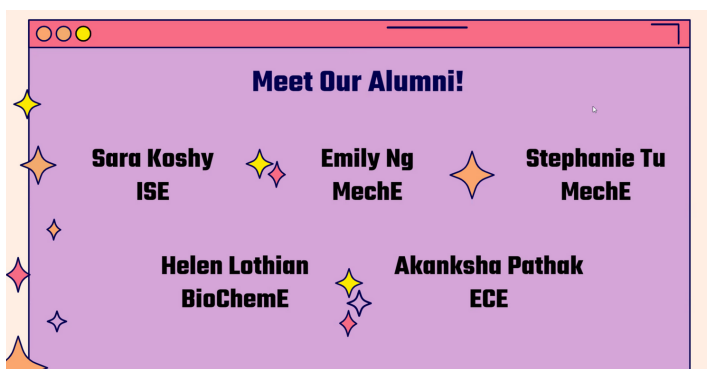
by Alisha Zhu

On February 2nd, SWE had the chance to network with Bloomberg representatives and work through Bloomberg logic puzzles together. Bloomberg is known for creating challenging yet exciting puzzles, which typically culminates to a full day's competition for their interns each year. The puzzles that we solved included a range of themes, such as Monopoly, Super Mario Bros., superheroes, and coding. We definitely had to put our thinking caps on! Our members had a great time learning more about the different opportunities that Bloomberg offered, and we want to thank Bloomberg for sharing their puzzles with us!



Game Night with Alumni

by Anushka Pathak



On February 9th, nine of our lovely alumni joined us to play a SWE styled Jeopardy which consisted of trivia and Rutgers themed questions. Everyone was split into teams and had the opportunity to discuss their answers in breakout rooms. This proved to be a fun and informal way to network, as well as a much needed break from schoolwork. Our members thoroughly enjoyed interacting with our alumni in a more competitive setting. We look forward to strengthening our relations with the alumni network through more informal and professional events

Women in Consulting Panel with PA Consulting

by Pearl Buccine Schraeder

Many SWE members were extremely eager to learn about the world of consulting this year, especially as it relates to the healthcare and life sciences industries. PA Consulting reached out to partner with us, so we held a panel where women from their network joined us on April 1st. Members were able to learn about life as a consultant and ask the six panelists questions. They were encouraged to set up coffee-chats after the event to build their professional networks and learn about the company. All in all, this event marked the beginning of a beautiful corporate friendship!

IMP/Alumni Banquet

by Bhavini Lakshmanan

SWE members and alumni came together to connect one last time at the end of the Rutgers school year! We were able to both celebrate the hard work the mentors and mentees of the IMP Program put in to further their professional development, as well as appreciate the support of SWE alumni this year. SWE members and alumni were able to network through 30-minute breakout sessions and discuss both light-hearted and professional questions with each other! This was a wonderful way to thank all the alumni and IMP mentors for their interaction and support with Rutgers SWE! We look forward to future events with our alumni and IMP mentors, and thank them once more for their encouragement!



End of Year Banquet

by Elizabeth DeFazio

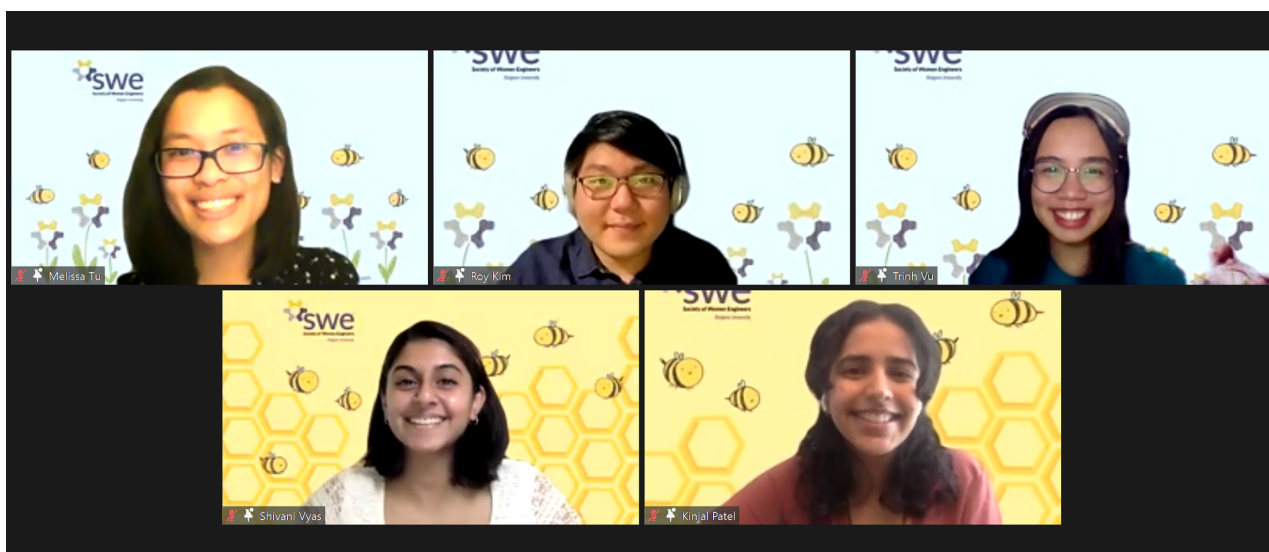
During our annual EOY Banquet, we celebrated all of SWE's accomplishments throughout the past year. We evolved our section and thrived in a virtual environment, from hosting our first virtual career fair to creating science kits to mail to Girl Scout Troops. We recognized graduating seniors for their dedication throughout their collegiate journey.



SWE '20-'21 Accomplishments



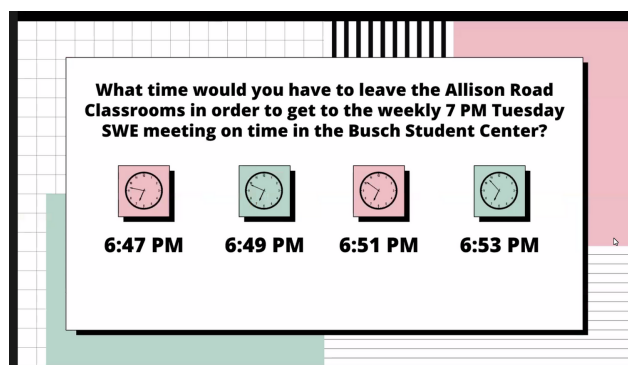
Awards for attendance, innovation, and commitment were given to SWE members at all grade levels. To close the night, we played games over Zoom and reflected on past SWE events. It was the perfect way to end a challenging but worthwhile year for SWE, and we look forward to starting the Fall semester!



Trivia Night

by Belinda Wong

To start off the Spring semester, SWE members came back together for a fun night of trivia! During this friendly competition, members were split into teams and tested on their knowledge of SWE, Avatar, Netflix, and other fun topics. This event served as a great opportunity for members to reconnect with each other by sharing their winter break adventures and plans for the upcoming semester.

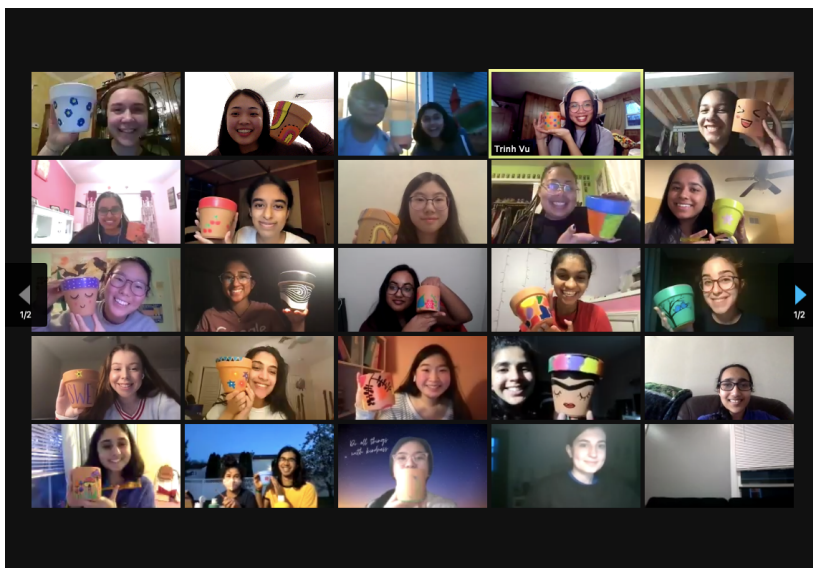


Painting Pot Day

by Katie Lynch

On April 20th, SWE members came together to spend time with each other and relax before the end of the semester! Our SWE members received terracotta pots and acrylic

paint markers in the mail before the event. After a short presentation, we spent time in breakout rooms designing our terracotta pots, painting, and chatting with one another. We had an amazing time connecting with each other and de-stressing while painting! It was great to see all the artistic talent our SWE members have.

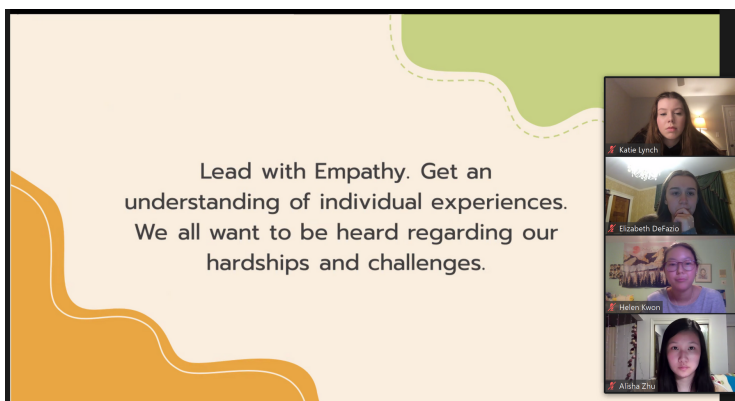


Privilege Workshop

by Brooklyn M Castillo

During SWE's very first Privilege Workshop, we came together to identify and express examples of privilege in the world in which we live. As privilege skews our personal interactions and judgments by blinding us to systemic barriers for those who do not have a certain privilege, SWE members discussed and participated in activities that helped

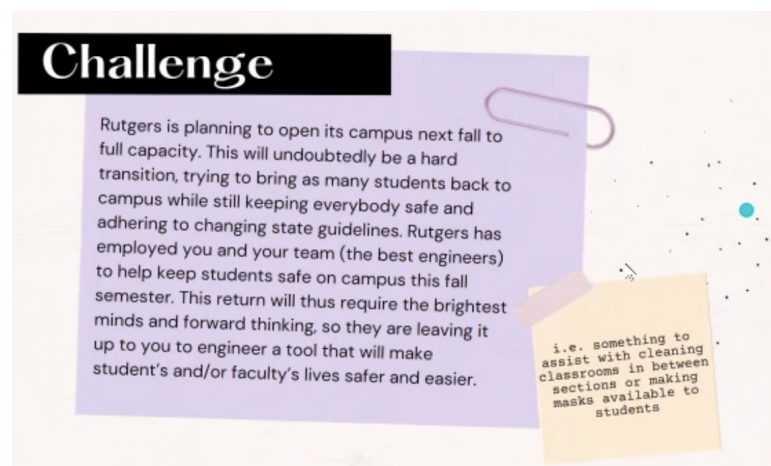
each of us recognize the privileges we hold. Though we spent just an hour taking a step back and acknowledging what we have, the SWE community will continue to hold each other and ourselves accountable so we can continue to fight against the barriers that result in privileges that everyone is not able to possess.



Race to Rutgers

by Helen Kwon

As engineers, we are constantly solving problems to help the world become a better place for the future. At this particular SWE event, members were broken up into teams to come up with an innovation that would be critical on our path back to in-person learning. Not only did we put our technical skills to the test by using TinkerCAD to come up with a plan, but we were also challenged to work and present collaboratively to pitch the best solution. This was a fun introduction to what engineering is to our underclassmen, but also a reminder to our upperclassmen on what the principles of engineering are at its core value; creative problem solving.

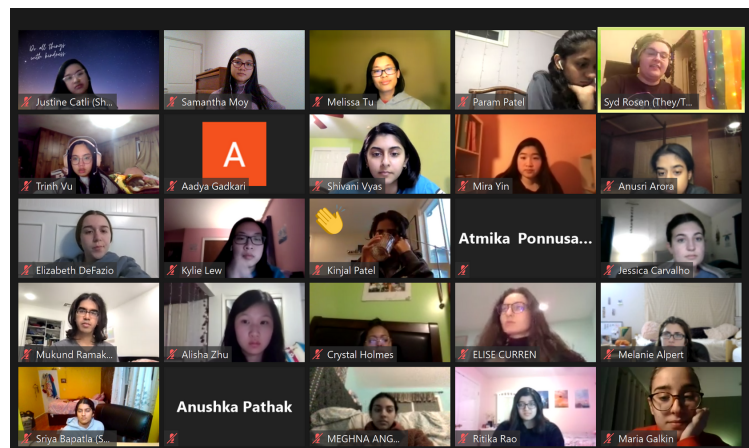
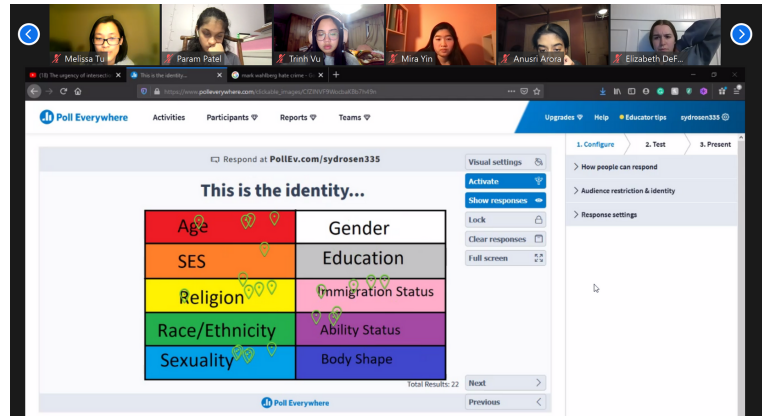


Intersectionality Matters - Discussion w/ SCREAM Theatre

by Justine Catli

SWE's collaboration with SCREAM (Students Challenging Realities and Educating Against Myths) Theatre, lead by discussion facilitator, Syd Rosen, opened dialogue past the textbook definition of intersectionality through our personal experiences with discrimination based on race, gender, sexual identity, and more. Earmarked by interactive polling elements, each layer of discussion emphasized empathy and inclusion. Participants faced questions such as "Do you feel included by society?" and "To what extent does your gender/racial/sexual identity affect your experience?" Thanks

to SCREAM Theatre, we had a space to confide in and talk to each other about critical issues and recount experiences we otherwise might not share as womxn in engineering. We also had a space to talk about recognizing the roles of privilege and the notion of "passing" in our daily lives, comparing and contrasting those consequences that influence our day to day. S(WE) champion inclusivity, and "Intersectionality Matters" is one of the many ways we were able to strengthen our commitment this past year.



Follow Us!

WWW.SWE.RUTGERS.EDU



SWE-RUTGERS
SECTION



@SWERUTGERS



@SWERUTGERS

Thank You to Our Sponsors!

PLATINUM



SILVER



Bloomberg



facebook®

icims®

LANGAN